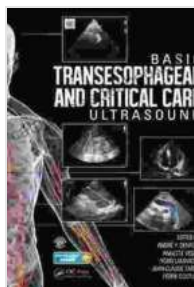


Basic Transesophageal and Critical Care Ultrasound: A Comprehensive Guide for Practitioners



Transesophageal echocardiography (TEE) and critical care ultrasound (CCUS) are essential imaging modalities that provide real-time, bedside

information to guide patient management in various clinical settings. TEE is a specialized form of echocardiography performed through the esophagus, commonly used in intraoperative cardiac surgery and intensive care units. CCUS encompasses a range of ultrasound techniques applied in critical care environments to assess various organ systems, including the heart, lungs, and abdomen.



Basic Transesophageal and Critical Care Ultrasound

by Alexander R Vaccaro

★★★★★ 5 out of 5

Language : English
File size : 67095 KB
Text-to-Speech : Enabled
Screen Reader : Supported
Enhanced typesetting : Enabled
Print length : 971 pages



Basic Transesophageal Echocardiography (TEE)

TEE is an invasive procedure that involves inserting a thin, flexible ultrasound probe into the esophagus to obtain images of the heart from a transesophageal perspective. It offers superior image quality compared to transthoracic echocardiography (TTE), particularly for visualizing the posterior structures of the heart, such as the left atrium and mitral valve.

Indications for TEE

* Intraoperative cardiac surgery monitoring * Evaluation of suspected cardiac abnormalities, such as valvular disorders, cardiac masses, or

congenital heart defects * Assessment of cardiac function in critically ill patients

Procedure

* The patient is placed in a fasted state. * The esophagus is numbed with a local anesthetic. * The ultrasound probe is inserted into the esophagus under direct visualization. * The probe is advanced and manipulated to obtain optimal views of the heart and surrounding structures.

Critical Care Ultrasound (CCUS)

CCUS utilizes portable ultrasound devices to perform rapid, point-of-care assessments of critically ill patients. It allows clinicians to visualize organ systems and identify abnormalities that may not be evident from physical examination or other diagnostic tests.

Indications for CCUS

* Assessment of cardiac function and volume status * Evaluation of pulmonary status, including detection of pneumothorax, pleural effusions, and lung consolidations * Examination of the abdomen for free fluid, organ damage, or intra-abdominal hemorrhage * Guidance for procedures such as central line placement and vascular access

Techniques

* **Cardiac ultrasound:** Focused assessment with sonography for cardiac output (FAST-ECHO) protocol for rapid evaluation of cardiac function and volume status. * **Lung ultrasound:** Point-of-care ultrasound (POCUS) lung protocol for detecting and assessing pulmonary abnormalities. *

Abdominal ultrasound: Rapid ultrasound in shock (RUSH) protocol for evaluating the abdomen for fluid collections and organ damage.

Clinical Applications

TEE and CCUS have numerous clinical applications in various settings:

* **Intraoperative monitoring:** TEE is indispensable in cardiac surgery to monitor cardiac function, guide surgical interventions, and assess post-operative complications. * **Critical care management:** CCUS empowers clinicians in the intensive care unit to rapidly assess cardiac function, pulmonary status, and abdominal conditions. It aids in timely interventions and optimization of patient care. * **Emergency medicine:** CCUS provides a valuable tool for rapid triage and management of critically ill patients in emergency departments. * **Outpatient clinics:** TEE and CCUS can be used in outpatient settings for the evaluation of suspected cardiac abnormalities and other conditions.

Training and Certification

Formal training and certification are essential for performing TEE and CCUS safely and effectively. Training programs typically include didactic sessions, hands-on practice, and supervised scanning experiences. Certification is available through professional organizations such as the American Society of Echocardiography (ASE) and the Society of Critical Care Medicine (SCCM).

Advantages of TEE and CCUS

* **Real-time bedside imaging:** Allows for immediate assessment of patient status without the need for transportation to a radiology department. * **Non-invasive (for CCUS):** Avoids the risks associated with invasive

procedures, such as radiation exposure or contrast agents. * **Portable and accessible:** CCUS devices can be easily transported and used in various clinical settings, including emergency departments, operating rooms, and intensive care units. * **Cost-effective:** Compared to other imaging modalities, TEE and CCUS are relatively affordable and cost-effective.

Limitations and Considerations

* **Invasive nature of TEE:** Requires esophageal intubation, which can cause discomfort or complications in some patients. * **Operator dependency:** The quality of images and interpretation of findings rely heavily on the skill and experience of the operator. * **Limited field of view:** TEE and CCUS have a limited field of view, which may not always provide a comprehensive evaluation of all organ systems. * **Contraindications:** Certain conditions, such as esophageal abnormalities or recent surgery, may contraindicate TEE.

Basic transesophageal echocardiography and critical care ultrasound are valuable imaging modalities that provide real-time, comprehensive information to guide patient management in various clinical scenarios. By combining anatomical visualization with physiological data, TEE and CCUS enable clinicians to make timely and informed decisions, optimize patient care, and improve outcomes. As these technologies continue to evolve, their applications will likely expand, further enhancing the diagnostic and therapeutic capabilities in healthcare.

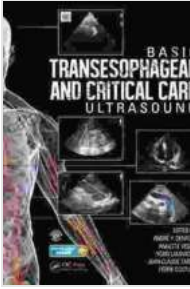
Basic Transesophageal and Critical Care Ultrasound

by Alexander R Vaccaro

★★★★★ 5 out of 5

Language : English

File size : 67095 KB



Text-to-Speech : Enabled
Screen Reader : Supported
Enhanced typesetting : Enabled
Print length : 971 pages



The Routledge Handbook of Feminist Peace Research: A Comprehensive Guide

The Routledge Handbook of Feminist Peace Research is a groundbreaking and comprehensive collection of essays that examines the intersections of...



Unveiling the Lyrical Mastery of Henri Cole's "Blizzard Poems"

In the realm of contemporary poetry, Henri Cole's "Blizzard Poems" stands as a testament to the transformative power of language and imagery. Through a...